

OKAYO

USB 2.0
Hi-Speed

Audio Guide AT-100 Series 2.0



[UPDATE SOFTWARE MANUAL]

INDEX

How to install OKAYO Audio Guide AT-100 Series 2.0 Update Software	3
OKAYO AT-100 Series 2.0 Update Simplified Manual	8
1. Illustration	8
2. How to create a new project	9
3. How to open an existent project	9
4. How to save a project	10
5. How to check if source file exists or not	10
6. How to know if AT-100 available	11
7. How to update data to AT-100	12
8. How to proceed updating to a single file	15
9. How to change language folder	15
10. How to monitor source file	16
11. How to create a cue	16
12. How to set a denotation and default language to multi-language folders	16
13. How to set up shutdown time of AT-100	17

Thank you for the purchase of OKAYO AT-100 S2.0 Update Software. This simplified manual offers a basic comprehension for the operation. Please read it over before starting the installation.

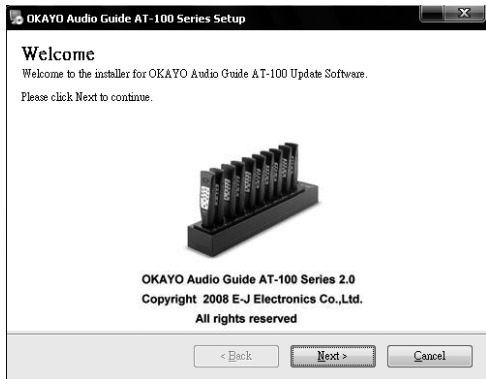
How to install OKAYO Audio Guide AT-100 S2.0 Update Software

1. Insert CD-ROM and click "OKAYO Audio Guide AT-100 Series 2.0 setup".



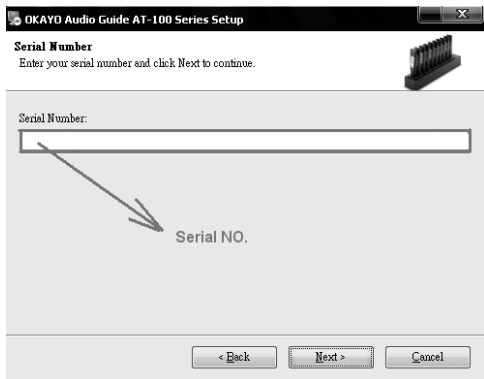
(Figure 1)

2. Click "Next" to continue installation, shown as figure 2.



(Figure 2)

3. Enter "serial number" that wrote down on hard copy of license agreement and click "Next".



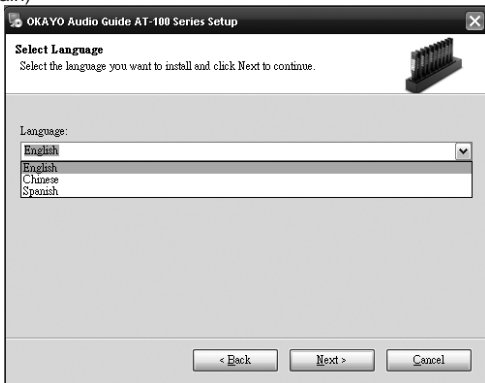
(Figure 3)

4. Enter user name and company name then click "Next" to continue installation.



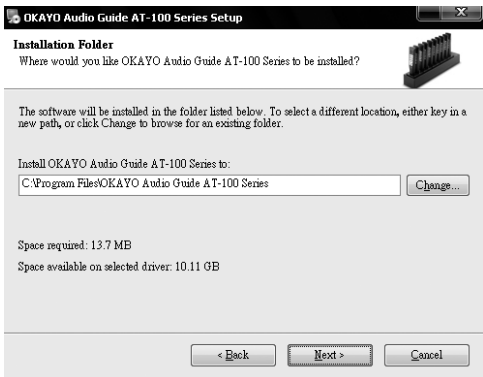
(Figure 4)

5. Select targeted language to install, shown as figure 5. (English, Chinese and Spain)



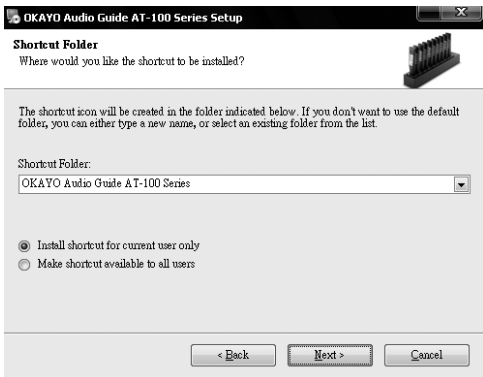
(Figure 5)

6. Set a route to this installation. "C:\Program Files" is the default route. Click "Next" to continue when finished this step, shown as figure 6.



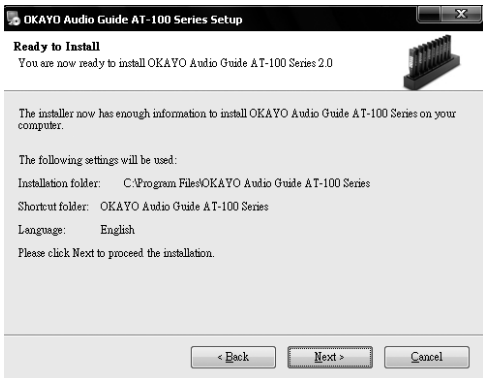
(Figure 6)

7. Set a name to the shortcut folder and click “Next” to continue, shown as figure 7.



(Figure 7)

8. Figure 8 gives related information for this installation. Click “Next” to continue.



(Figure 8)

9. Figure 9 shows installation in process.



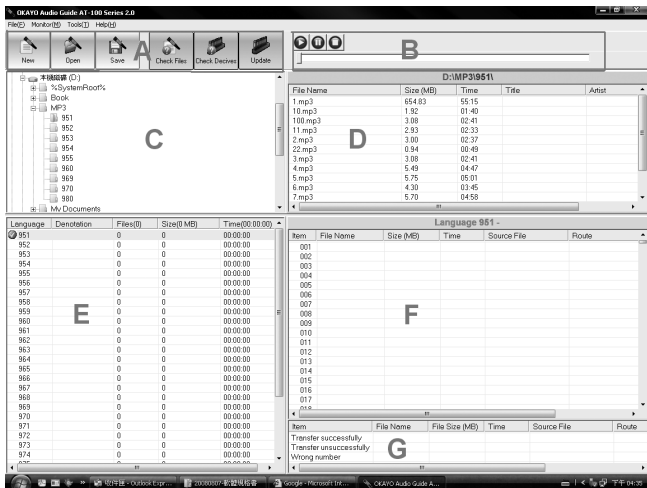
(Figure 9)

10. When installation completed, a shortcut will be created on desktop, shown as figure 10.



(Figure 10)

1. Illustration:



A. Tool bar: Offer different tools to create, open, save, refresh, check and update a file or folder.

B. Player: To monitor the source files real timely.

C. Explorer: For users to explore source files.

D. Summary: Offer summary information of source files.

E. Multi-language folders: Offer up to 32 language folders. (number code from 951~982)

F. Data programming area: Offer up to 950 files per language folder. (number code from 1~950)

G. Cue area: To edit system files at this area.

2. How to create a new project:

Click “New” to create a new project, shown as figure 11. Before creating it the system will give a message and ask you to save it when existing file not saved.



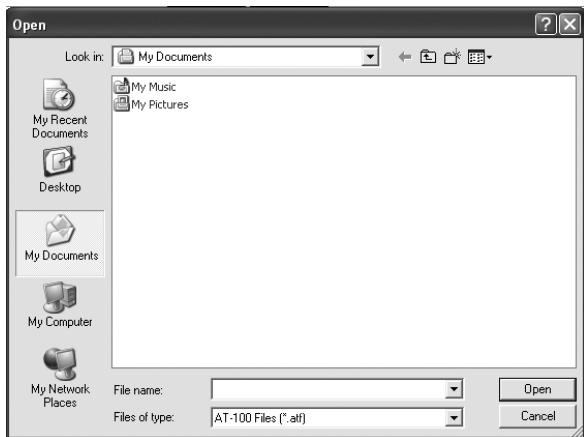
(Figure 11)

3. How to open an existent project:

Click “Open” (shown as figure 12) to select and open an existent file (shown as figure 13).



(Figure 12)



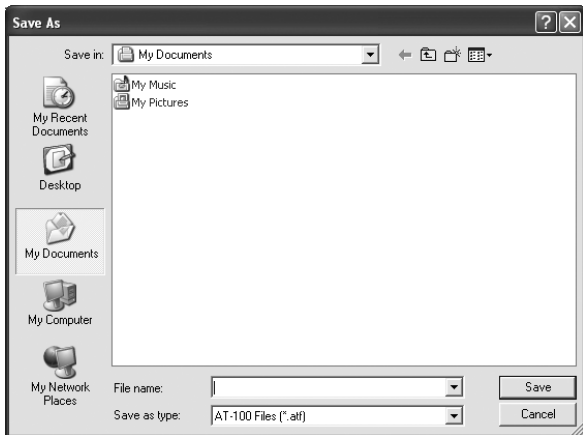
(Figure 13)

4. How to save a project:

Click “Save” to save an edited project, shown as figure 14. Then give this



(Figure 14)



(Figure 15)

5. How to check if source file exists or not:

Click “Check Files” to identify if a completely edited file exists or not, shown as figure 16. When a file lost or missed, it will come out a message window like this “Some files do not exist! Please check this project”, shown as figure 17. A mark will be made on the questioned file, shown as figure 18.



(Figure 16)



(Figure 17)

Language 951 -				
Item	File Name	Size (MB)	Time	Source File
001	1.mp3	2.76		
002	2.mp3	2.76		
003	3.mp3	2.76		
004	4.mp3	2.76		
005				
006				
007				
008				
009				
010				
011				
012				

(Figure 18)

6. How to know if AT-100 available:

Click “Check Devices” (shown as figure 19) to identify how many AT-100 are available to update. This function is to make sure each AT-100 put on Audio Guide Updater is in good connection with computer. All available AT-100 will be listed and displayed on “Check AT-100 space”, shown as figure 20. Figure 20 indicates that 5 pcs of AT-100 were connected to the computer.



(Figure 19)



(Figure 21)

D:\SOURCE\				
File Name	Size (MB)	Time	Title	Artist
A1.mp3	2.76	02:24		
A10.mp3	4.76	04:09		
A11.mp3	2.95	02:34		
A12.mp3	1.72	01:30		
A13.mp3	0.77	00:40		
A14.mp3	2.91	02:32		
A2.mp3	2.57	02:14		
A3.mp3	5.58	04:52		
A4.mp3	5.21	04:32		
A5.mp3	4.48	03:54		
A6.mp3	2.66	02:19		

(Figure 22)

D:\SOURCE\					
File Name	Size (MB)	Time	Title	Artist	
A1.mp3	2.76	02:24			
A10.mp3	4.76	04:09			
A11.mp3	2.95	02:34			
A12.mp3	1.72	01:30			
A13.mp3	0.77	00:40			
A14.mp3	2.91	02:32			
A2.mp3	2.57	02:14			
A3.mp3	5.58	04:52			
A4.mp3	5.21	04:32			
A5.mp3	4.48	03:54			
A6.mp3	2.66	02:19			

Language 951 -					
Item	File Name	Size (MB)	Time	Source File	Route
001					
002					
003					
004					
005					
006					
007					
008					
009					
010					
011					
012					
013					
014					
015					
016					
017					
018					

(Figure 23)



(Figure 24)



(Figure 25)

8. How to proceed updating to a single file:

Select a targeted file and right-click on "Update", shown as figure 26.

Language 951 -					
Item	File Name	Size (MB)	Time	Source File	Route
001	1.mp3	3.08	02:41	3.mp3	D:\MP3\951\
002	2.mp3	5.75	05:01	5.mp3	D:\MP3\951\
003	3.mp3	5.70	04:58	7.mp3	D:\MP3\951\
004					
005					
006					
007					
008					
009					
010					
011					
012					
013					
014					
015					
016					
017					
018					

(Figure 26)

9. How to change language folder:

Simply move the arrow to a selected language folder and have left button clicked, shown as figure 27.

Language	Denotation	Files(0)	Size(0 MB)	Time(00:00:00)
951		0	0	00:00:00
952		0	0	00:00:00
953		0	0	00:00:00
954		0	0	00:00:00
955		0	0	00:00:00
956		0	0	00:00:00
957		0	0	00:00:00
958		0	0	00:00:00
959		0	0	00:00:00
960		0	0	00:00:00
961		0	0	00:00:00
962		0	0	00:00:00
963		0	0	00:00:00
964		0	0	00:00:00
965		0	0	00:00:00
966		0	0	00:00:00
967		0	0	00:00:00
968		0	0	00:00:00
969		0	0	00:00:00
970		0	0	00:00:00
971		0	0	00:00:00
972		0	0	00:00:00
973		0	0	00:00:00
974		0	0	00:00:00
975		0	0	00:00:00

(Figure 27)

10. How to monitor source file:

Select a file and play it on “Player”, shown as figure 28.



(Figure 28)

11. How to create a cue:

Cue area” provides users to make a note for a file that changed successfully or failed to change or wrong number made, shown as figure 29.

Item	File Name	Size (MB)	Time	Source File	Route
Transfer successfully					
Transfer unsuccessfully					
Wrong number					

(Figure 29)

12. How to set a denotation and default language to multi-language folders:

Right-click on any folder listed in multi-language area then it comes out an option “Set denotation” and “Set default language”, shown as figure 30. When you click “Set denotation”, the system will ask you to enter a description for targeted folder, shown as figure 31.

Language	Denotation	Files(0)	Size(0 MB)	Time(00:00:00)
951		0	0	00:00:00
952		0	0	00:00:00
953		0	0	00:00:00
954		0	0	00:00:00
955		0	0	00:00:00
956		0	0	00:00:00
957		0	0	00:00:00
958		0	0	00:00:00
959		0	0	00:00:00
960		0	0	00:00:00
961		0	0	00:00:00
962		0	0	00:00:00
963		0	0	00:00:00
964		0	0	00:00:00
965		0	0	00:00:00
966		0	0	00:00:00
967		0	0	00:00:00
968		0	0	00:00:00
969		0	0	00:00:00

(Figure 30)



(Figure 31)

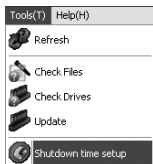
When you click “Set default language” on a targeted folder, a “tick” will be made to that folder, shown as figure 32.

Language	Denotation	Files(0)	Size(0 MB)	Time(00:00:00)
951	ENG	0	0	00:00:00
952		0	0	00:00:00
953		0	0	00:00:00
954		0	0	00:00:00
955		0	0	00:00:00
956		0	0	00:00:00
957		0	0	00:00:00
958		0	0	00:00:00
959		0	0	00:00:00
960		0	0	00:00:00
961		0	0	00:00:00
962		0	0	00:00:00
963		0	0	00:00:00
964		0	0	00:00:00
965		0	0	00:00:00
966		0	0	00:00:00
967		0	0	00:00:00
968		0	0	00:00:00
aca		0	0	00:00:00

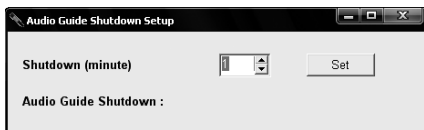
(Figure 32)

13. How to set up shutdown time of AT-100:

Select “Shutdown time setup” from “Tool”, shown as figure 33. It comes a message window for shutdown setting, shown as figure 34.



(Figure 33)



(Figure 34)

Shutdown time could be set at 1~30 minutes. Click set to finalize this setting, shown as figure 35.



(Figure 35)

OKAYO

Sound & Communication

E-J ELECTRONICS CO., LTD.

4F, No.11, Lane 125, Sec 1, Kuo Kwang Rd., Ta Li City,
Taichung Hsien, Taiwan

Tel:+886-4-2407-1617 Fax:+886-4-2407-1609

E-mail:okayo@okayo.com

www.okayo.com

Ver 1.0